



**PROPERTY:** Bursting strength paper

METHOD: ISO 2758  
CEPI-TEST: 2.14

**ROUND:** 2012-1

**SAMPLE:** Level - 1  
UNIT: kPa

**REPORT:** <<< H >>>  
ISSUED BY: PIRA

INDICATIVE VALUE: 100÷160

**STATISTICS**

**RESULTS OF A-ROUND**

NUMBER OF LABS 16  
**CEPI-A-MEAN** 137  
CEPI-SD-WITHIN 10.0  
CEPI-SD-BETWEEN 8.4

**CEPI-RANGE:**

WARNING LIMITS  
CEPI-A-MEAN - 2,0 SD 120  
CEPI-A-MEAN + 2,0 SD 154

ACTION LIMITS

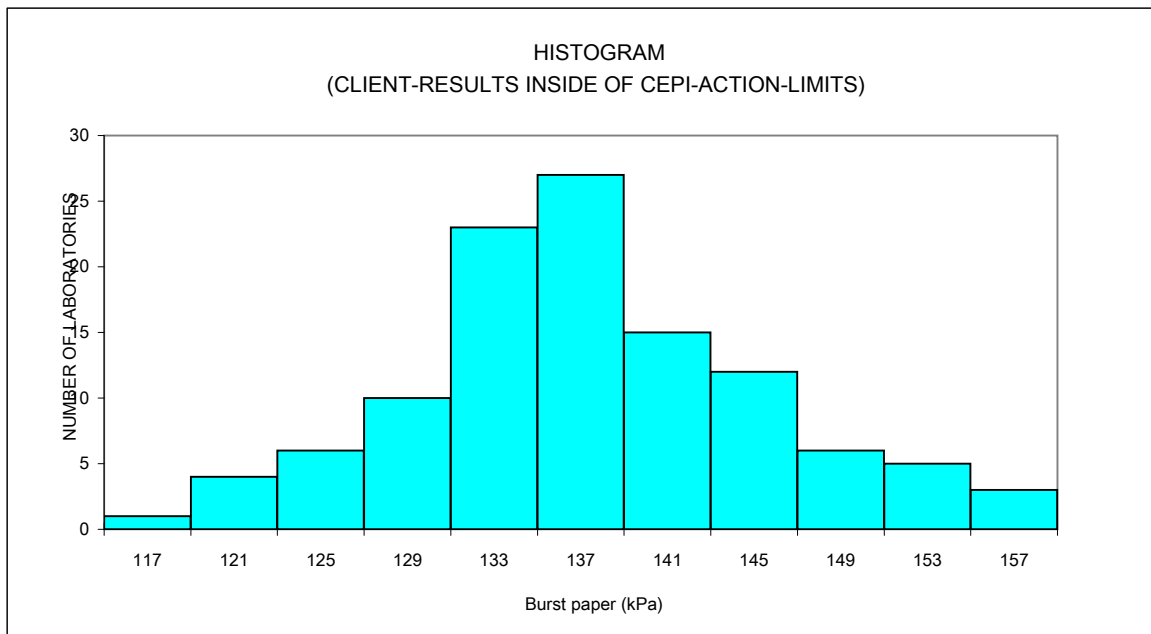
CEPI-A-MEAN - 2,6 SD 115  
CEPI-A-MEAN + 2,6 SD 159

**RESULTS OF CLIENTS**

NUMBER OF LABS 121  
OUTLIER FOR LIMITS 9  
OUTLIER FOR SD 0  
**NUMBER OF VALID VALUES** 112  
OVERALL-MEAN 137  
SD WITHIN 10.2  
SD BETWEEN 7.9

**DATA FOR HISTOGRAM**

NUMBER OF BARS 11  
WIDTH OF CLASS 4



\* Values on the X-axis correspond to middle of the classes

Signed by Chris Berry  
for PIRA as a member of the  
CEPI Comparative Testing Service

Date 19/06/2012



**PROPERTY:** Bursting strength paper

METHOD: ISO 2758  
CEPI-TEST: 2.14

**ROUND:** 2012-1

**SAMPLE:** Level - 2  
UNIT: kPa

**REPORT:** <<< H >>>  
ISSUED BY: PIRA

INDICATIVE VALUE: 300÷400

**STATISTICS**

**RESULTS OF A-ROUND**

NUMBER OF LABS 17  
**CEPI-A-MEAN** 336  
CEPI-SD-WITHIN 16.0  
CEPI-SD-BETWEEN 13.9

**CEPI-RANGE:**

WARNING LIMITS  
CEPI-A-MEAN - 2,0 SD 308  
CEPI-A-MEAN + 2,0 SD 364

ACTION LIMITS

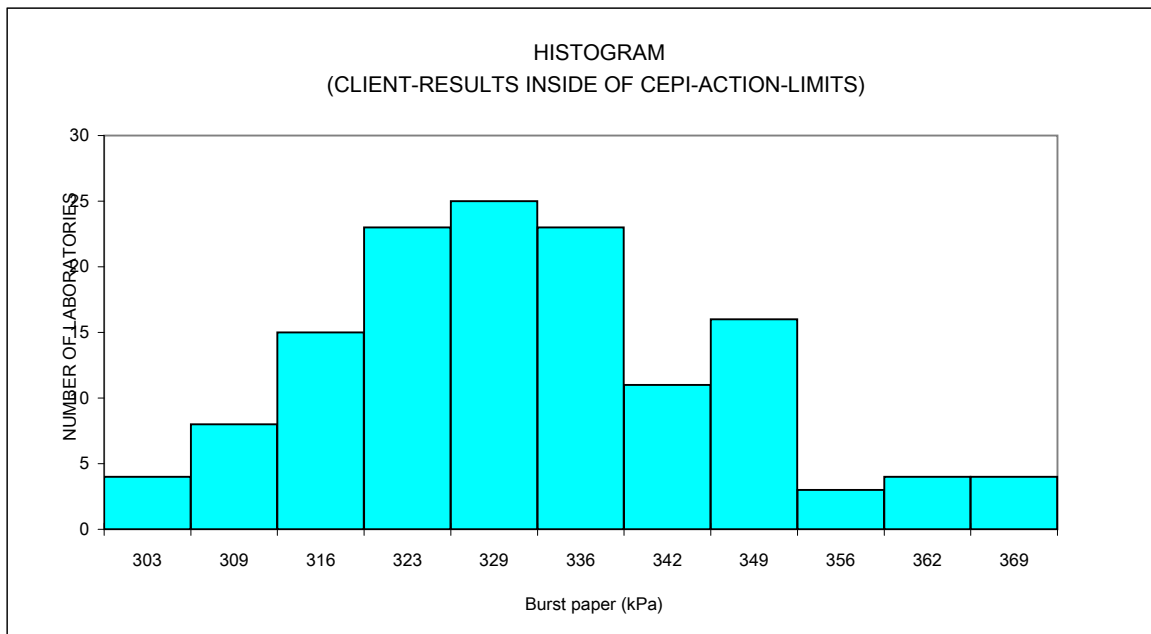
CEPI-A-MEAN - 2,6 SD 300  
CEPI-A-MEAN + 2,6 SD 372

**RESULTS OF CLIENTS**

NUMBER OF LABS 147  
OUTLIER FOR LIMITS 11  
OUTLIER FOR SD 0  
**NUMBER OF VALID VALUES** 136  
**OVERALL-MEAN** 332  
SD WITHIN 15.5  
SD BETWEEN 14.8

**DATA FOR HISTOGRAM**

NUMBER OF BARS 11  
WIDTH OF CLASS 7



\* Values on the X-axis correspond to middle of the classes

Signed by Chris Berry  
for PIRA as a member of the  
CEPI Comparative Testing Service

Date 19/06/2012



**PROPERTY:** Bursting strength paper

METHOD: ISO 2758  
CEPI-TEST: 2.14

**ROUND:** 2012-1

**SAMPLE:** Level - 3  
UNIT: kPa

**REPORT:** <<< H >>>  
ISSUED BY: PIRA

INDICATIVE VALUE: 600±700

**STATISTICS**

**RESULTS OF A-ROUND**

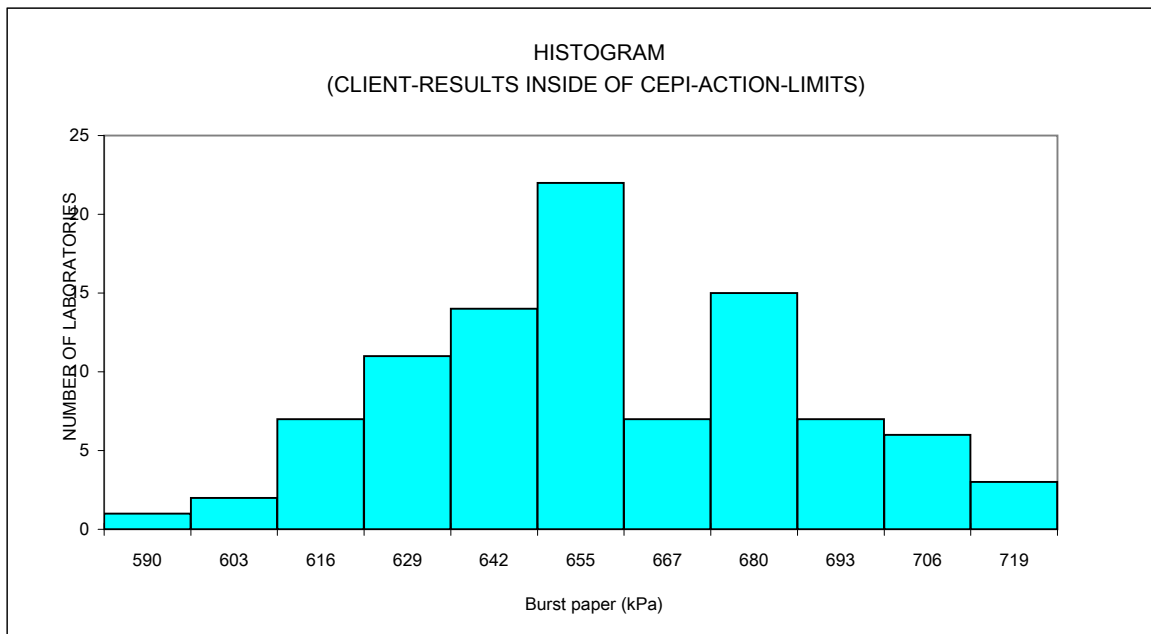
NUMBER OF LABS	17
<b>CEPI-A-MEAN</b>	655
CEPI-SD-WITHIN	21.1
CEPI-SD-BETWEEN	27.1
<b>CEPI-RANGE:</b>	
WARNING LIMITS	
CEPI-A-MEAN - 2,0 SD	600
CEPI-A-MEAN + 2,0 SD	709
ACTION LIMITS	
CEPI-A-MEAN - 2,6 SD	584
CEPI-A-MEAN + 2,6 SD	725

**RESULTS OF CLIENTS**

NUMBER OF LABS	101
OUTLIER FOR LIMITS	6
OUTLIER FOR SD	0
<b>NUMBER OF VALID VALUES</b>	95
OVERALL-MEAN	658
SD WITHIN	20.0
SD BETWEEN	28.3

**DATA FOR HISTOGRAM**

NUMBER OF BARS	11
WIDTH OF CLASS	13



\* Values on the X-axis correspond to middle of the classes

Signed by Chris Berry  
for PIRA as a member of the  
CEPI Comparative Testing Service

Date 19/06/2012



**PROPERTY:** Bursting strength paper

METHOD: ISO 2758  
CEPI-TEST: 2.14

**ROUND:** 2012-1

**SAMPLE:** Level - 4  
UNIT: kPa

**REPORT:** <<< H >>>  
ISSUED BY: PIRA

INDICATIVE VALUE: 750+900

**STATISTICS**

**RESULTS OF A-ROUND**

NUMBER OF LABS 17  
**CEPI-A-MEAN** 811  
CEPI-SD-WITHIN 17.9  
CEPI-SD-BETWEEN 43.0

**CEPI-RANGE:**

WARNING LIMITS  
CEPI-A-MEAN - 2,0 SD 725  
CEPI-A-MEAN + 2,0 SD 897

ACTION LIMITS

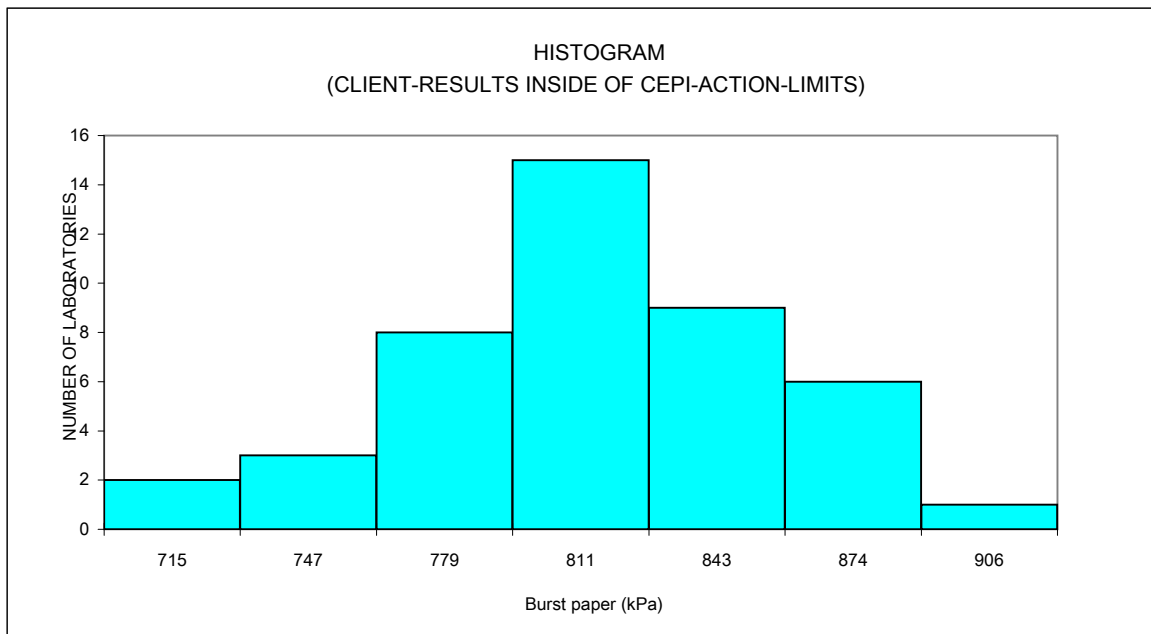
CEPI-A-MEAN - 2,6 SD 699  
CEPI-A-MEAN + 2,6 SD 922

**RESULTS OF CLIENTS**

NUMBER OF LABS 45  
OUTLIER FOR LIMITS 0  
OUTLIER FOR SD 1  
**NUMBER OF VALID VALUES** 44  
OVERALL-MEAN 815  
SD WITHIN 27.2  
SD BETWEEN 40.1

**DATA FOR HISTOGRAM**

NUMBER OF BARS 7  
WIDTH OF CLASS 32



\* Values on the X-axis correspond to middle of the classes

Signed by Chris Berry  
for PIRA as a member of the  
CEPI Comparative Testing Service

Date 19/06/2012